

WORKPLACE ELECTRICAL FATALITIES 2011 - 2023

electrical safety
FOUNDATION INTERNATIONAL

In 2025, the Electrical Safety Foundation International (ESFI) compiled data from the **U.S. Bureau of Labor Statistics** (BLS) and the **Occupational Safety and Health Administration** (OSHA) to track **electrical safety trends in the workplace**. ESFI found that **certain demographics and occupations** are more prone to **electrical incidents in the workplace**.

ELECTRICAL SAFETY IN THE WORKPLACE



Contact with electricity is one of the leading causes of **fatalities in the workplace**

150

...workplace **electrical fatalities** occur on average **every year** according to the BLS

74%

...of workplace electrical fatalities **occurred in non-electrical occupations** according to OSHA

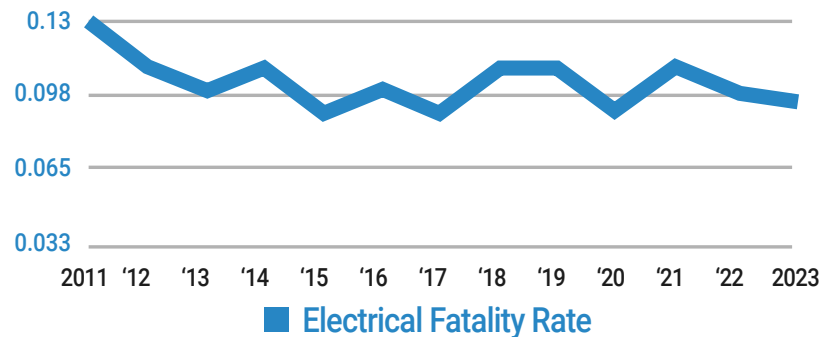
5.6%

...of all workplace fatalities were **caused by contact with electricity**

ELECTRICAL FATALITY RATES

Electrical Fatality Rate per 100,000 Workers

Bureau of Labor Statistics



Electrical fatality rates have **remained consistent year over year**. More needs to be done to **reduce the amount of electrical fatalities in the workplace**

Hispanic or Latino workers **have the highest rate of electrical fatalities** and experience a **disproportional amount of electrical fatalities**

Construction and extraction occupations; installation, maintenance, and repair occupations; and building and grounds cleaning and maintenance occupation **have the highest rate of electrical fatalities**

ELECTRICAL FATALITY BY OCCUPATION

10

...occupations accounted for **over 58% of workplace electrical fatalities**

1



Electricians

2



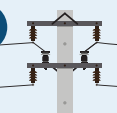
Laborers, except construction

3



Construction laborers

4



Electrical power installers & repairers

5



Tree trimming occupations

6



Electricians' apprentices

7



Heating, air conditioning, & refrigeration mechanics

8



Roofers

9



Heavy truck drivers

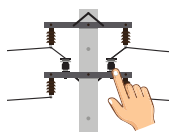
10



Painters in construction or maintenance

ELECTRICAL FATALITY CAUSES

91% of all of workplace fatalities were caused by the following



Overhead power line contact **48.2%**



Unexpected contact with electricity **19.3%**



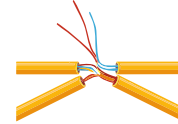
Nearby energized equipment contact **12.7%**



Working on energized parts **4.1%**



Ground-faults **4.0%**



Damaged wiring or equipment **3.1%**

ESFI.org



www.facebook.com/ESFI.org



www.twitter.com/ESFI.org



www.youtube.com/ESFI.org